

# Monthly THP-Plus/THP+FC Conference Call

---

THURSDAY, JULY 9<sup>TH</sup>: 10:00 TO 11:00 A.M.



**JOHN  
BURTON  
FOUNDATION**  
FOR CHILDREN  
WITHOUT HOMES

# AGENDA

---

1. Welcome and introduction
2. THP-Plus Annual Report
3. Latest Numbers
4. Budget Update
5. Policy Update
6. 2015 THP-Plus/THP+FC Institute
7. More input on future JBF project

# It's Time Already: The THP-Plus/THP+FC Annual Report

---

## **Provides year-end information for THP-Plus and THP+FC**

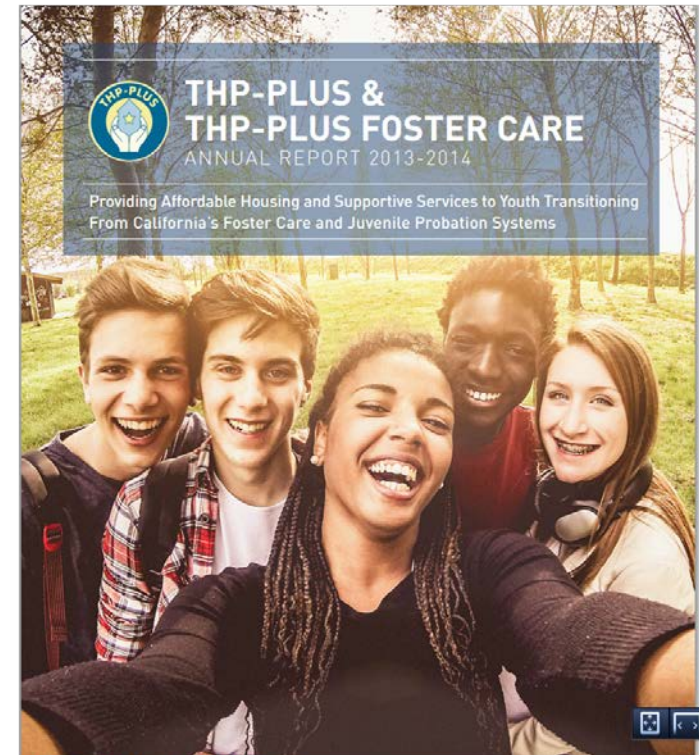
- Number of youth served
- Rates by county
- Youth outcomes

## **Identifies key trends, developments and challenges in both programs**

- Youth interviews
- County interviews
- Provider interviews

## **We need you to ensure report is successful!**

- Provider survey due July 16<sup>th</sup>; just 20% received so far!
- County survey due August 1st

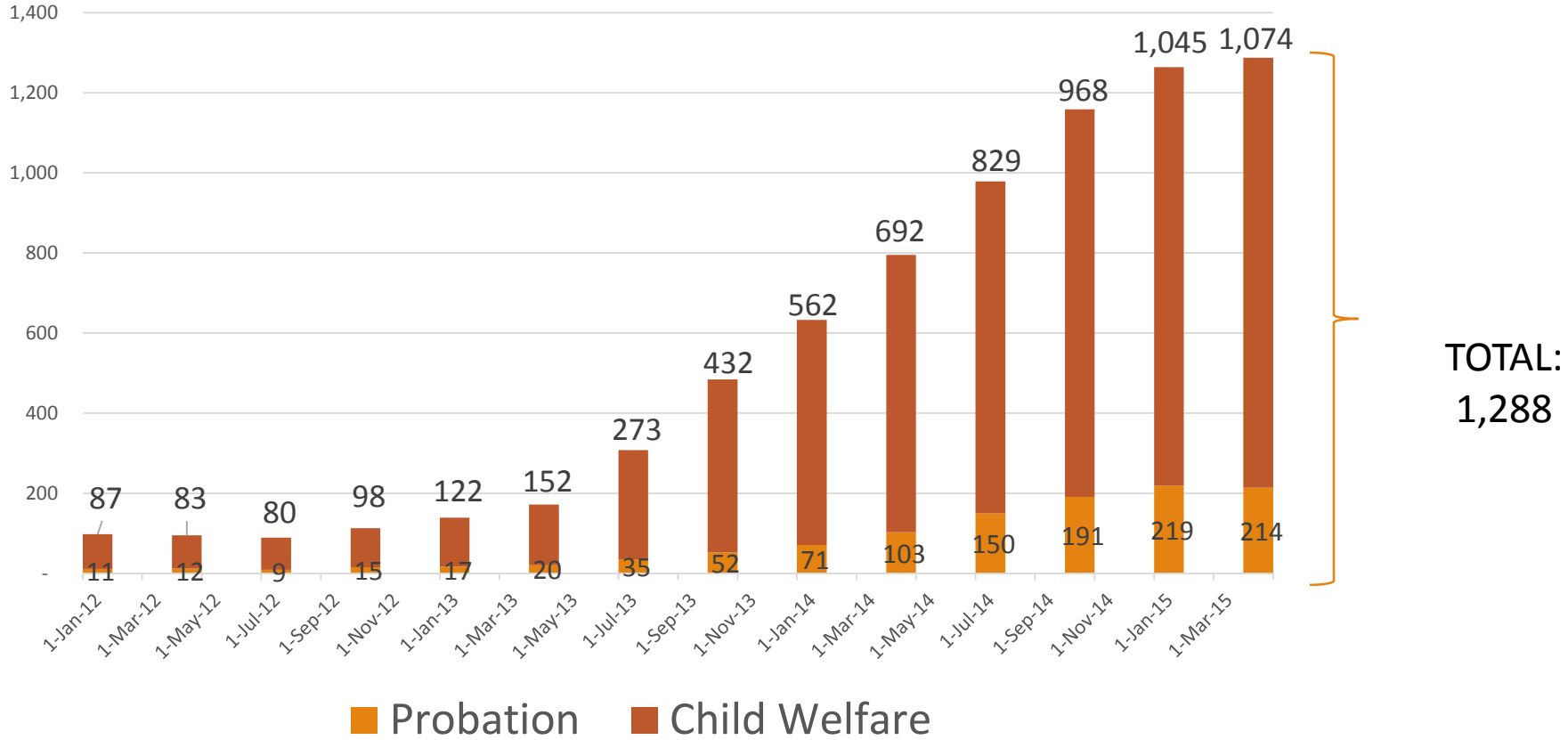


---

# Latest THP+FC Numbers

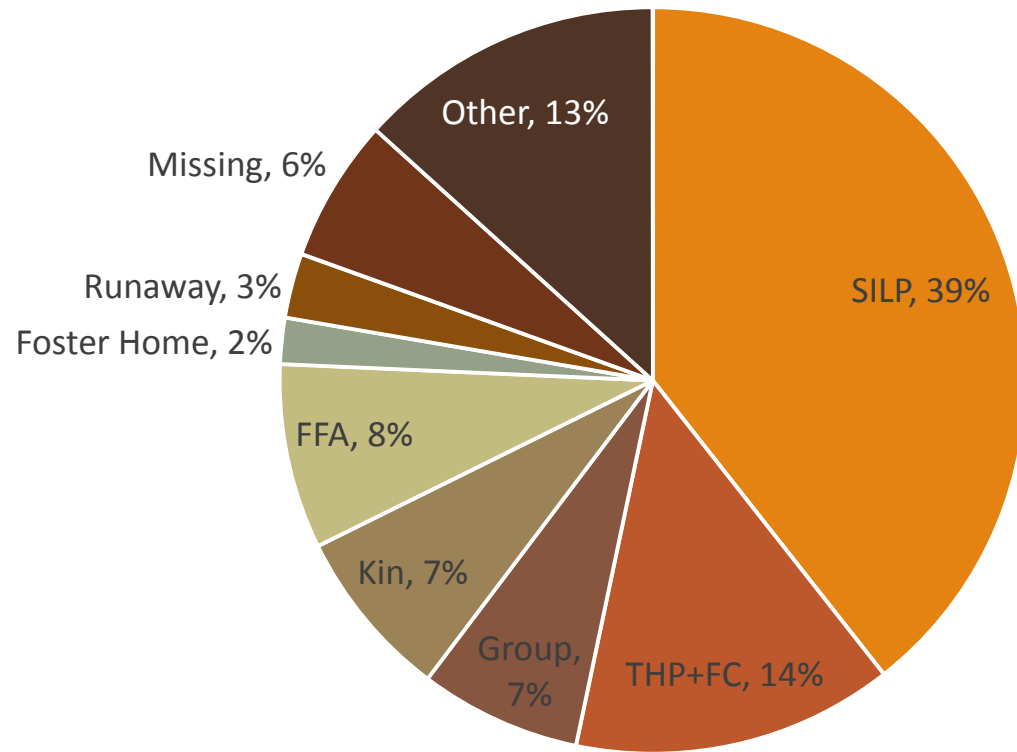


# Growth in THP+FC



# How is THP+FC Relative to Other Placements?

---



# Top 20 Counties Placing into THP+FC

---

*As of April 1, 2015*

<b>Alameda</b>	199
<b>Los Angeles</b>	163
<b>Sacramento</b>	100
<b>San Diego</b>	84
<b>Contra Costa</b>	65
<b>San Francisco</b>	56
<b>Orange</b>	53
<b>Santa Clara</b>	53
<b>Riverside</b>	51
<b>San Bernardino</b>	51

<b>Butte</b>	39
<b>Ventura</b>	36
<b>Solano</b>	28
<b>Sonoma</b>	28
<b>Shasta</b>	24
<b>Placer</b>	22
<b>San Joaquin</b>	22
<b>Yolo</b>	21
<b>Kern</b>	20
<b>Merced</b>	20

---

# State Budget Wrap-Up





# Child Welfare in the State Budget

---

## Wins

Foster Parent and Relative  
Recruitment: \$15 million

Dependency Counsel: \$11 million

Foster Youth Services: \$10 million

Academic Support for Foster Youth in  
Community College: \$15 million

FFA Rate Augmentation: \$4.2 million

## Losses

THP-Plus Augmentation- \$30 million

Bringing Families Home: \$7 million

Specialized Care Increment for All  
Families-\$15 million

# Why Did THP-Plus Proposal Fail?

---

**Proposal was introduced late in the process**

**Perception that THP-Plus is underspent due to [Realignment report](#)**

- \$34,928,000 realigned to counties; \$26,739,000 expended in 2013-14

**No champion in the Senate**

**Many good competing priorities and pent up demand to restore cuts**

<b>County</b>	<b>Realigned Funding</b>
Alameda	\$ 2,897,614.00
Butte	\$ 323,580.00
Calaveras	\$ 104,190.00
Contra Costa	\$ 1,089,309.00
Del Norte	\$ 374,846.00
El Dorado	\$ 304,283.00
Fresno	\$ 522,346.00
Glenn	\$ 207,278.00
Humboldt	\$ 173,650.00
Imperial	\$ 99,969.00
Inyo	\$ 121,554.00
Kern	\$ 825,481.00
Kings	\$ 72,160.00
Lake	\$ 250,055.00
Lassen	\$ 138,919.00
Los Angeles	\$ 2,165,106.00
Madera	\$ 145,629.00
Marin	\$ 283,683.00
Mariposa	\$ 178,485.00

<b>County</b>	<b>Realigned Funding</b>
Mendocino	\$ 277,839.00
Merced	\$ 244,141.00
Monterey	\$ 410,701.00
Napa	\$ 444,744.00
Nevada	\$ 144,763.00
Orange	\$ 1,698,256.00
Placer	\$ 551,102.00
Plumas	\$ 61,280.00
Riverside	\$ 866,043.00
Sacramento	\$ 1,984,843.00
San Bernardino	\$ 1,052,386.00
San Diego	\$ 4,831,711.00
San Francisco	\$ 2,474,795.00
San Joaquin	\$ 539,866.00
San Luis Obispo	\$ 421,298.00
San Mateo	\$ 1,476,186.00
Santa Barbara	\$ 331,036.00
Santa Clara	\$ 2,086,413.00
Santa Cruz	\$ 472,410.00

<b>County</b>	<b>Realigned Funding</b>
Shasta	\$ 194,488.00
Solano	\$ 962,670.00
Sonoma	\$ 376,268.00
Stanislaus	\$ 327,303.00
Sutter	\$ 260,474.00
Tehama	\$ 355,430.00
Trinity	\$ 270,656.00
Tulare	\$ 215,680.00
Tuolumne	\$ 105,316.00
Ventura	\$ 65,987.00
Yolo	\$ 162,128.00
Yuba	\$ 318,413.00

# What Else Made it into the Final Budget?

---

## **Child Care & Early Childhood Education**

- Restores 6,000 subsidized child care slots: \$52.6 million
- 7,030 full-day pre-school: \$34.3 million
- 2,500 part-day preschool slots: \$12.1 million

## **State Earned Income Tax Credit**

- Maximum credit \$2,653; targets on very low-income households; great opportunity for foster youth: \$22 million

## **Undocumented Immigrants**

- Medi-Cal for Undocumented Immigrant Children and Youth: \$40 M; \$132 M in FY 15-16
- Assistance to apply for deferred action: \$15 million

## **CalWORKs Housing Support Program**

- Additional \$15 million for housing for CalWORKs recipients

---

# Legislative Update



# What are Key Child Welfare Bills to Watch in the Assembly?

---

## **AB 260: Parenting foster youth**

- Prevents foster care history from being used in determining if child is at risk for maltreatment.

## **AB 403: CCR Implementation**

- Implements Continuum of Care Reform recommendations; eliminates groups home 1/1/2017

## **AB 423: Relative Caregivers**

- Clean-up to Approve Relative Caregiver program

## **AB 592: Proof of Dependency or Wardship**

- Authorizes CDSS to provide proof; helpful for school/Medi-Cal

## **AB 1299: Mental Health for Out-of-County Youth**

- Clarifies county of residence pays for mental health

# What are Key Child Welfare Bills to Watch in the Senate?

---

## **SB 238: Psychotropic Drugs**

- Requires improved training and tracking related to psychotropic medication

## **SB 319: Public Health Nurses for Foster Youth Prescribed Psychotropic Drugs**

- Requires public health nurse to monitor

## **SB 445: Allows Homeless Youth to Remain at School of Origin**

- Also eases registration for homeless students

## **SB 484: Information and Accountability RE Psyc Meds**

- Requires notice to foster families and ID of groups homes with high rates of utilization

## **SB 12: Extended Foster Care for Probation Youth**

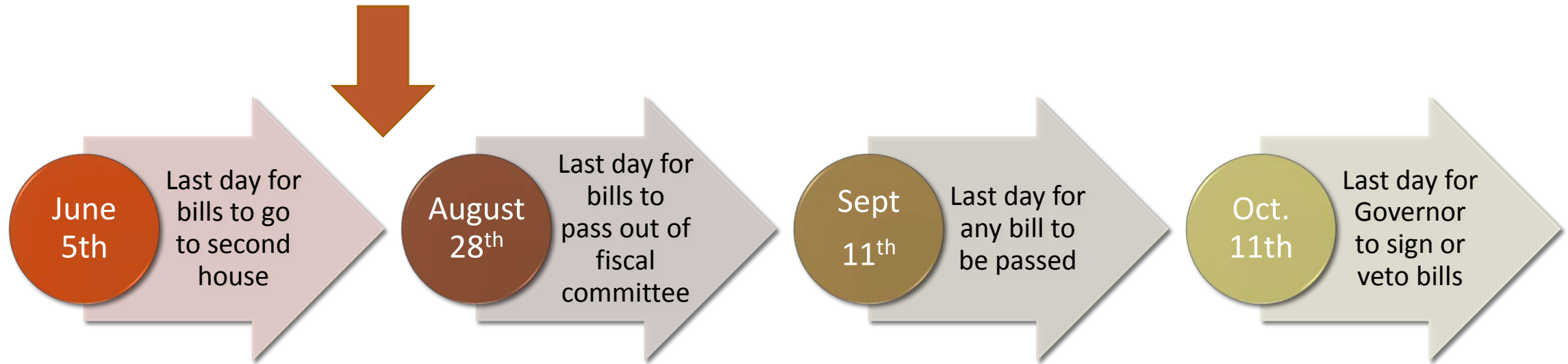
Provides youth in secure confinement on 18<sup>th</sup> birthday opportunity to participate

## **SB 238: Require Court Order for Psch Meds**

- Additional \$15 million for housing for CalWORKs recipients

# Where are We in the Legislative Process?

---



*Statutes take effect on January 1<sup>st</sup>;  
We are in the first year of a two-year legislative session*



---

# 2015 THP-Plus/THP+FC Institute

# 2015 THP-Plus/THP+FC Institute: December 17, 2015

---



## **Workshops to Strengthen Practice**

Topics have included rent payment, property procurement, medical marijuana use, high rental costs, local fair housing requirements, intimate partner violence and strategies to serve youth with disabilities.

---



## **Workshops to Better Understand Policy and Use Data**

Understanding CCL waiver for staffing, occupancy requirements, accessing permanent affordable housing, measuring outcomes

---



## **Time to Network and Build Relationships**

Meet people in your area you can collaborate with and get ideas about how to strengthen and sustain your work.

# What Should I do Now?

---

1. Save the date: Thursday, December 17th
2. Submit a workshop proposal
  - Share what has worked with the THP-Plus and THP+FC community
3. Let us know if you want to be on the Institute Advisory Committee
  - Select workshop proposals
  - Recommend key note speaker
4. Register in early October!
  - Space is limited to 220 people



# Possible JBF Project

# Possible JBF Project

---

## Goal

- Improve rate of college attendance and completion among youth in THP-Plus and THP+FC

## Structure

- 18 to 24 month project
- Up to 20 organizations could elect to participate
- Receive intensive individual technical assistance
- Convene regionally and on state-level to learn from each other and experts
- Receive financial support to promote educational outcomes

***Survey will be sent to you to gauge your interest!***

# Next Call: Thursday, August 13<sup>th</sup>

---



**JOHN  
BURTON  
FOUNDATION**  
FOR CHILDREN  
WITHOUT HOMES